

Series *PFH/PFU* 3000/4000

Coalescing Filter / 0.3 μ m, 0.01 μ m



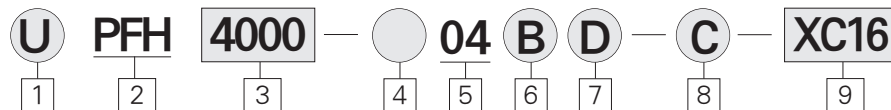
Series	Port Size	Bowl Capacity g (ozs)	Filtration	Symbol
PFH3000	1/4(8A), 3/8(10A)	56.7 (2.0)	0.3 μ m	
PFU3000			0.01 μ m	
PFH4000	3/8(10A), 1/2(15A)	170.1 (6.0)	0.3 μ m	
PFU4000			0.01 μ m	

● Element Color

White : 0.3 μ m

Black : 0.01 μ m

How to Order



1 Port

Blank : Rc (PT)
U : NPT

2 Filtration

PFH : 0.3 μ m
PFU : 0.01 μ m

3 Body Size

3000 : 1/4, 3/8
4000 : 3/8, 1/2

4 Thread

Blank : Rc(PT)
G : Rc(PF)

5 Port Size (PT/NPT)

02 : 1/4
03 : 3/8
04 : 1/2

6 Bracket

Blank : None
B : Bracket

7 Drain

Blank : Manual Drain
D : Auto Drain

8 Bowl Guard (3000 only)

Blank : None
C : Bowl Guard

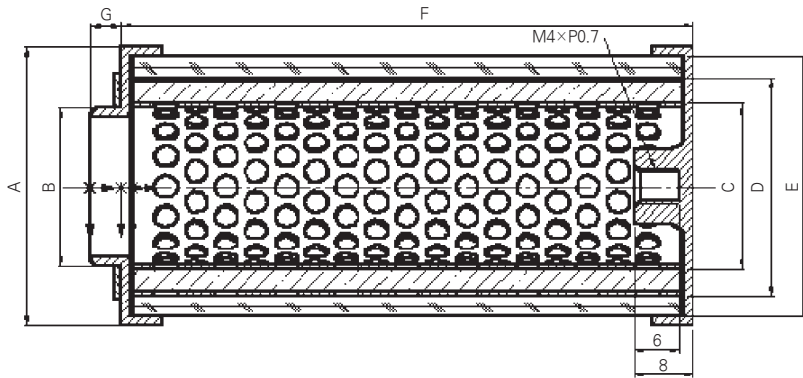
9 Special Option

Blank : Standard
XC16 : Copper-Free

Specifications

Series	PFH/PFU3000	PFH/PFU4000
Port Size	1/4, 3/8	3/8, 1/2
Filtration	PFH:0.3 μ m, PFU:0.01 μ m	
Max. Supply Pressure	1.5MPa(213 PSI)	
Max. Operating Pressure	1.05MPa(150 PSI)	
Ambient and Media Temperature	4.4~60° C(40 ~ 140° F)	
Bowl Material	Polycarbonate	
Bowl Capacity g (ozs)	56.7(2.0)	170.1(6.0)
Weight kgf(lbs)	0.29(0.64)	0.55(1.21)

COALESCING FILTER

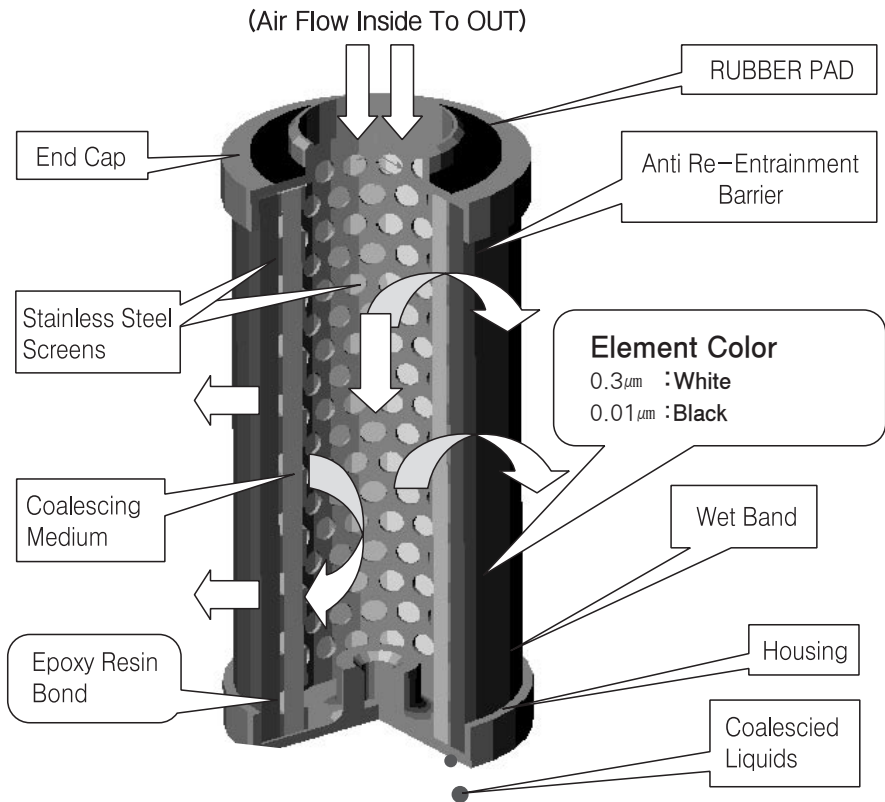


COALESCING FILTER ELEMENT SPEC.

Unit:mm(inch)

Series	A	B	C	D	E	F	G
PFH/U3000	∅30 (1.18)	∅16.5 (0.65)	∅18.5 (0.73)	∅24.6 (0.97)	∅27.5 (1.08)	44 (1.73)	4 (0.16)
PFH/U4000	∅37 (1.46)	∅21 (0.83)	∅21 (0.83)	∅32 (1.26)	∅34.5 (1.36)	67 (2.64)	4 (0.16)

Element Construction



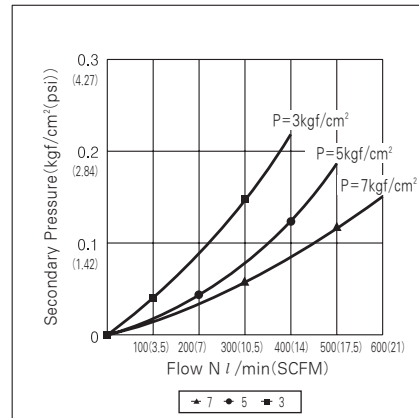
- PC
- PF
- PFH
PFU**
- PR
- PL
- PW
- SH
- TDF
- TAD
- PER
- EP

Accessories(Optional)

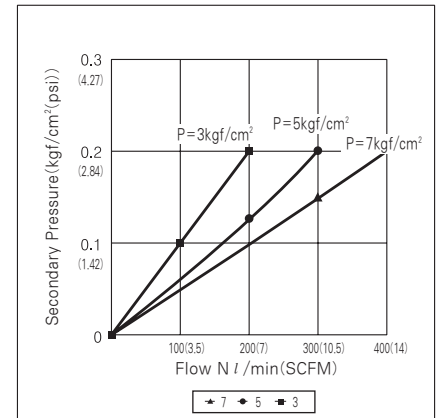
Name		Part No	
		PFH/PFU3000	PFH/PFU4000
Bracket		TAF3000-43-6004	TAC4000-08-6003
Auto drain	N.O	TAF3000-01A-6008	TAF4000-01A-6009

Flow Characteristics

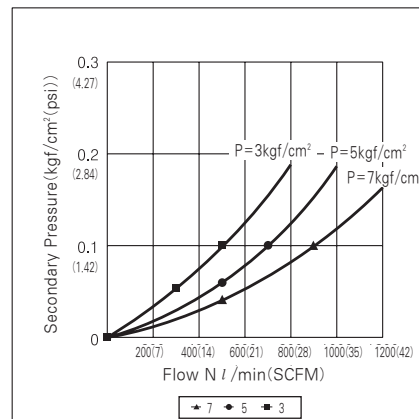
PFH3000



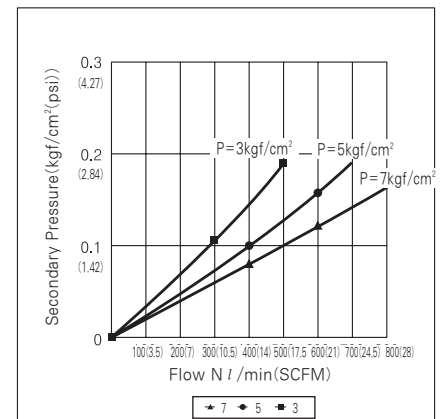
PFU3000



PFH4000



PFU4000



Precautions

Installation

- ① Flush piping before installation.
- ② The use of the piping adapters will make installation easier.
- ③ The regulator may be installed with the adjustment knob up or down.

Auto Drain

Float type (Normally Open)(PC3000, 4000)

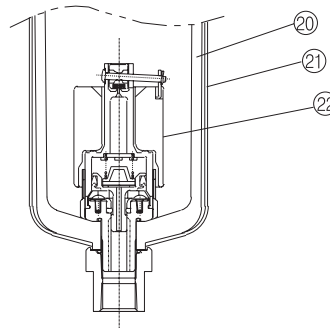
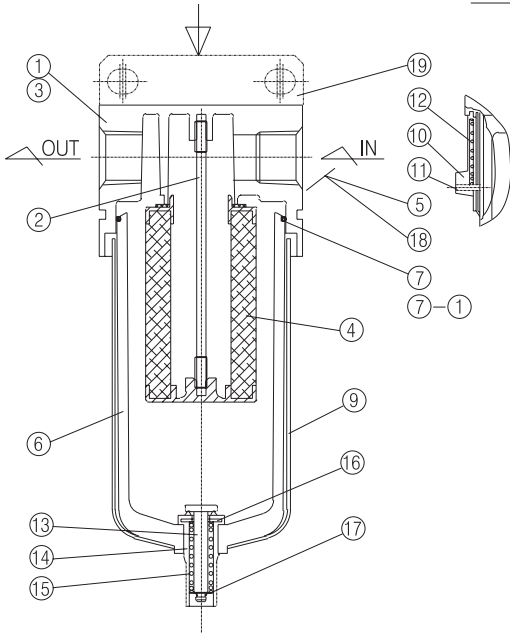
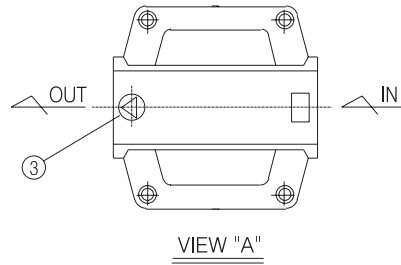
- ① Drain line should be 5/16 inch(8mm) or more and should be less than 16.5ft(5m)long. Be sure not to have any upward turns in the drain line which would prevent drainage.
- ② Unsuitable for flow below 3.5 SCFM(100N l/min)
- ③ Min. operating pressure is 15 PSI (1kgf/cm²)
- ④ Soft nylon tube of more than 3/32 inch(φ 2.5)O.D, is recommended for drain pipe. The length should be less than 16 ft.(5m)long.
- ⑤ Should be installed vertically.

Atmosphere

- ① Polycarbonate bowls may be damaged and possibly fail if exposed to synthetic oils, thinner solvents, trichlorethylene, kerosene of other aromatic hydrocarbons.

Construction/Parts List

- PC
- PF
- PFH
PFU**
- PR
- PL
- PW
- SH
- TDF
- TAD
- PER
- EP



※AUTODRAIN TYPE

Parts List

NO	Description	Material
①	BODY	AL
②	BAFFLE SHAFT	C2700W
③	AN ARROW LOGO	-
④	FILTER ELEMENT	-
⑤	WRENCH BOLT	SCM3
⑥	BOWL	POLYCARBONATE
⑦	BOWL O-RING	NBR
⑧	BOWL O-RING STOPPER	ACETAL
⑨	BOWL GUARD	SBCE
⑩	LOCK BUTTON	ABS
⑪	LOCK BUTTON PIN	ABS

NO	Description	Material
⑫	LOCK BUTTON SPRING	STS WPB
⑬	DRAIN STEM	C3604
⑭	HOUSING	NBR
⑮	DRAIN STEM	STS WPB
⑯	WASHER	BSS
⑰	STOPPER	STS
⑱	NAME PLATE	TETRON
⑲	BRACKET-A	SB
⑳	BOWL(AUTO DRAIN)	POLYCARBONATE
㉑	BOWL GUARD(AUTO DRAIN)	SBCE(SPCE)
㉒	AUTO DRAIN V/V ASS'Y	

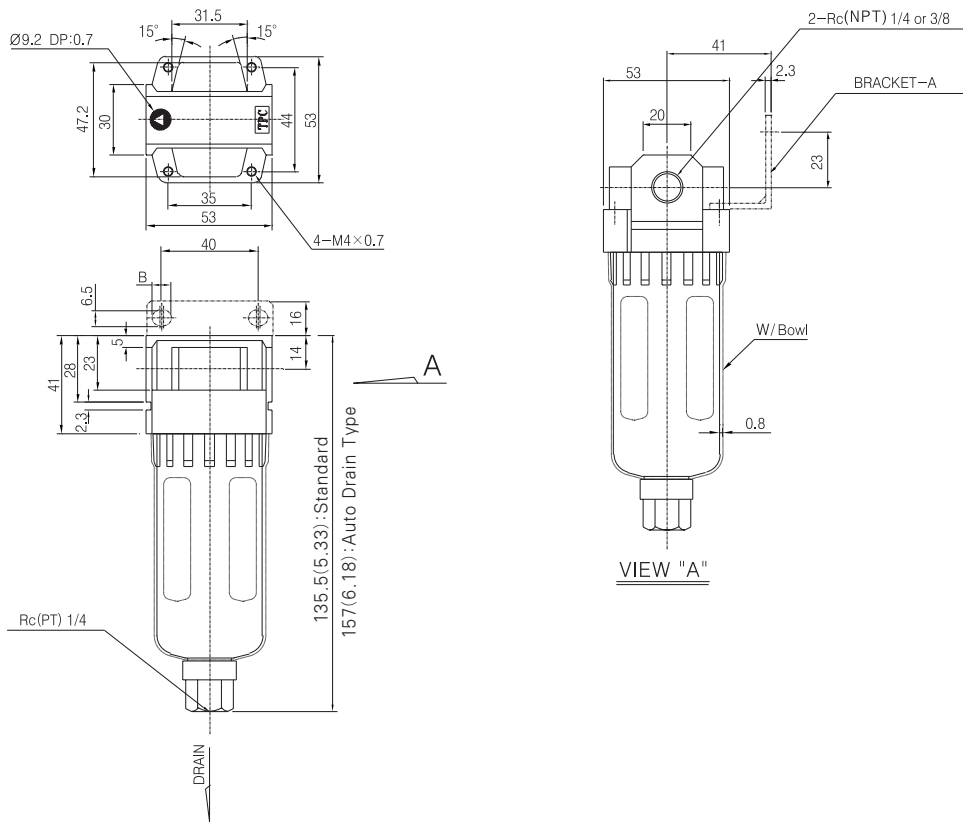
Spare Parts / Packing List

NO	Description	Description No	
		PFH/PFU3000	PFH/PFU4000
④	Filter Element	PFH3000-005A-6081	PFH4000-005A-6083
		PFU3000-005A-6082	PFU4000-005A-6084
⑦	Case ORing	TAF3000-08-6004	TAF4000-08-6000
⑦-①	Case Ass'y	TAF3000-07A-6004	TAF4000-07A-6000

Series PFH/PFU

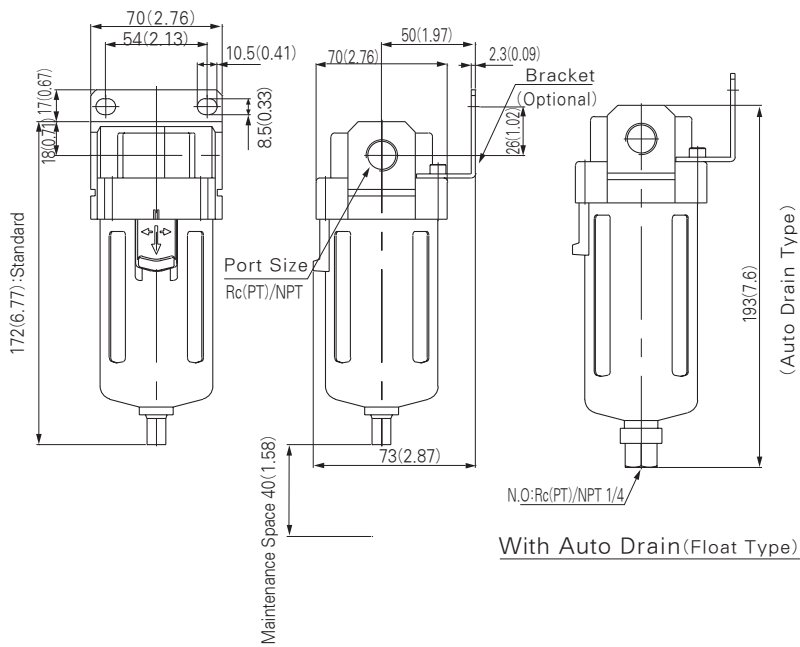
Dimensions PFH3000 / PFU3000

mm(inch)



Dimensions PFH4000 / PFU4000

mm(inch)



Maintenance

Warning

- ① The adjustment handle must be operated manually. Using a tool to turn the handle could lead to damage.
- ② Set up the regulator while verifying the pressure that is indicated on the primary and the secondary pressure gauges. Turning the handle excessively could damage the internal parts.
- ③ The pressure gauge that is prevent damage to the pressure gauge, make sure that a pressure that exceeds 0.2MPa is not applied.

Mounting / Adjustment

Caution

- ① Release the lock to adjust the pressure. After the adjustment, engage the lock. Failure to observe this procedure could damage the handle or cause the secondary pressure to fluctuate.

A) On the PR2000/5000 type, pull the adjustment handle to release the lock and push the adjustment handle to engage the lock. If it does not lock easily, turn the handle slightly clockwise or counterclockwise before pushing it.

On the PR3000/4000 type, pull the adjustment handle to release the lock. (An orange colored line is provided at the bottom of the adjustment handle for visual checking.) Push the adjustment handle to engage the lock. If it does not lock easily, turn the handle slightly clockwise or counterclockwise; then, push it until the orange colored line is no longer visible.

- ② Turning the pressure adjustment handle clockwise increases the secondary pressure and turning it counterclockwise decreases the pressure.

- ③ Make sure to check the primary pressure before setting the pressure. The secondary pressure must be set to 85% or less of the primary pressure. Failure to observe this procedure could cause the secondary pressure to fluctuate.

PC

PF

PFH
PFU

PR

PL

PW

SH

TDF

TAD

PER

EP